

Test Case-46

Test Name: RJIL-IP-QA-DS-SYS-047

Test Objective: To check the details on the maximum number of logical and physical interfaces it can support for uplink and downlink.

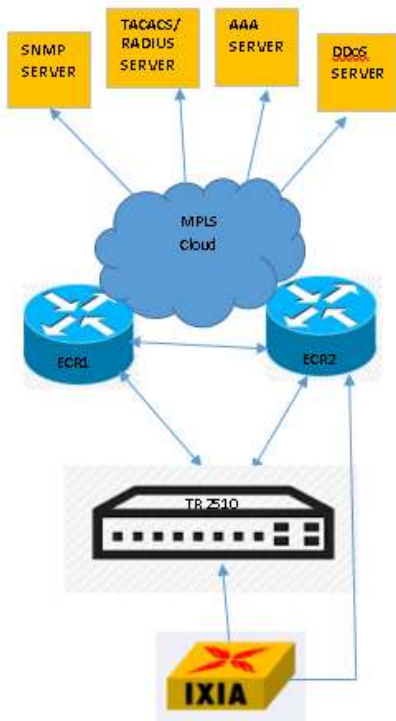
Test Configuration:

```
int vlan 883
```

```
ipv6 address 2405:200:1410:1010::84/125
```

```
!
```

Test Set up (Including Pre requisites): Switch, ECR1, ECR2, IXIA



Procedure: Connect switch to ECR1, ECR2 and IXIA

Action:

Response:

1	Connect uplink and downlink ports of the switch. Show interface vlan Show interface brief	1	Switch will show the details of maximum number of logical and physical interfaces it can support for uplink and downlink.
---	---	---	---

Expected Result: Switch will show the details of maximum number of logical and physical interfaces it can support for uplink and downlink.

Actual Result:

Switch_config#int vlan ?

<1-4094> -- VLAN interface number

Switch_config#int vlan

Switch_config#show int brief

Port	Description	Status	Vlan	Duplex	Speed	Type
g0/1		up	Trunk(1)	full	1000Mb	Giga-FX
g0/2		up	Trunk(1)	full	1000Mb	Giga-FX
g0/3		up	Trunk(1)	full	1000Mb	Giga-TX
g0/4		up	1	full	1000Mb	Giga-TX
g0/5		down	Trunk(1)	auto	auto	Giga-TX
g0/6		down	1	auto	auto	Giga-TX
g0/7		down	1	auto	auto	Giga-TX
g0/8		down	1	auto	auto	Giga-TX
g0/9		down	1	auto	auto	Giga-TX
g0/10		up	1	full	1000Mb	Giga-TX
v1		up				
v883		up				
v890		up				

Switch_config#